



2025 NATIONAL INTEGRATED SPECIAL REPORT –
DIGITAL AND NEWSPAPER

Patient-Centred Care

Shaping Healthcare Around the Lives It Serves

INTEGRATED CONTENT FEATURES: Turnkey solutions in which participating advertisers can be mentioned or quoted in at least one story.

Click on the report below to see a similar past feature



As Canada's healthcare system evolves, the importance of comprehensive patient support — emotional, informational, and logistical — has never been greater. This special feature will explore how healthcare providers, digital platforms, advocacy groups and caregivers are working together to empower patients, improve quality of life, and build a more compassionate system.

Proposed topic highlights:

Whole-Person Care: Addressing the physical, mental, and emotional aspects of health through integrated services and personalized approaches.

Health Literacy & Navigation: Tools and resources helping patients better understand their diagnosis, treatment options, and system pathways.

Peer & Community Support: The impact of support groups, shared experiences, and lived-experience mentorship in chronic and rare disease care.

Digital Tools & Access: How apps, tele-health, and patient portals are improving communication and reducing barriers to care.

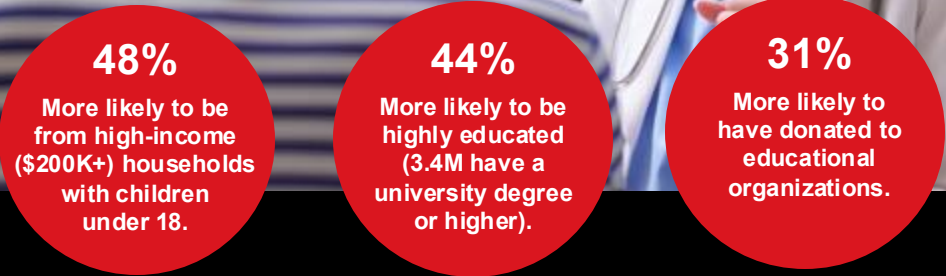
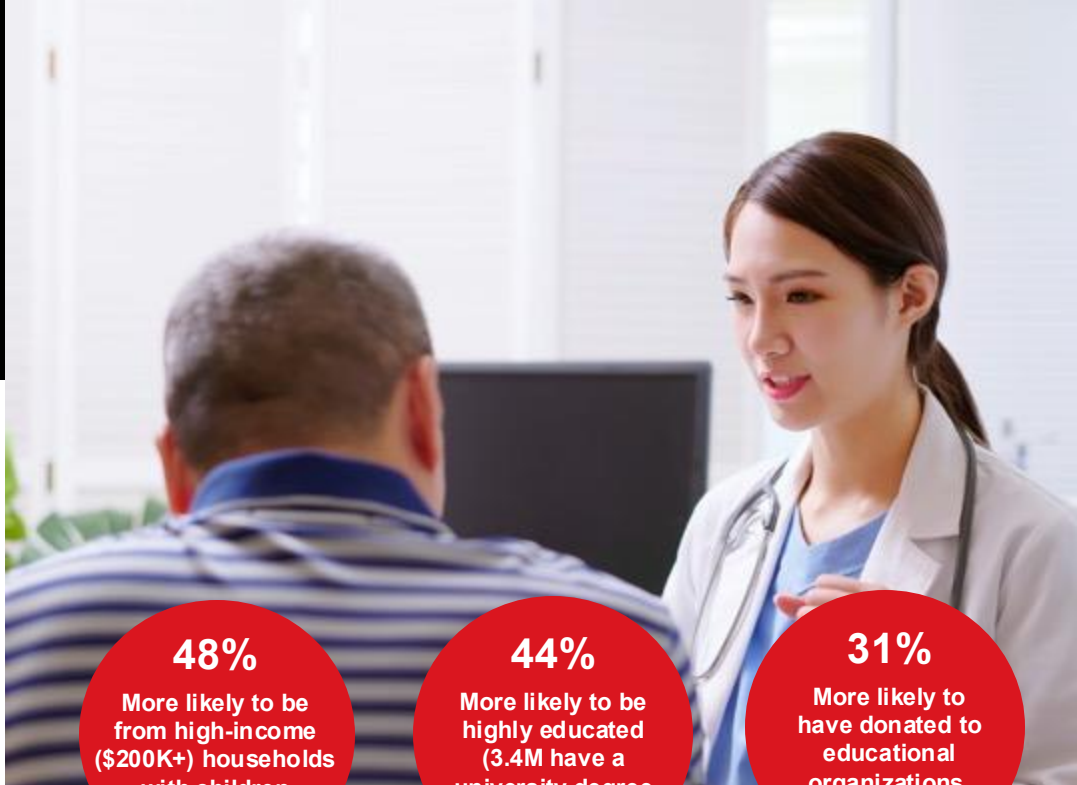
Caregiver Inclusion: Strategies for involving family caregivers as part of the care team and supporting their mental health and well-being.

Equity in Access: Highlighting efforts to ensure all patients — regardless of location, language, or background — receive timely and culturally competent care.

GET INVOLVED TODAY. CONTACT:

RICHARD DEACON, Project Manager T: 1.604.631.6636 E: rdeacon@globeandmail.com

Content produced by Randall Anthony Communications, a Globe-approved provider



Print/Digital Weekly Readers – 5,286,000
Print Weekly Readers – 2,417,000 | Digital Weekly Readers – 3,636,000

Source: Vividata SCC Fall, 2024, National, Adults 18+

Sponsor Content and Brand Ad Booking Deadline	Material Deadline	Publishing Date
July 9	August 29	September 9